

UCL Academic Manual 2024-25

Chapter 6: Student Casework Framework

Revised Annex 6.6.2

# Managing the Impact of Industrial Action on Assessment, Progression, and Award

---

This annex details the procedures for managing the impact of industrial action by university staff on assessment, progression, and award. The impact of industrial action varies across UCL; therefore, different situations will need to be considered on their merits in line with the regulations set out in the UCL Academic Manual. The key principles informing UCL's approach are fairness to students and maintenance of academic standards.

## 1 Regulatory Principles

1. In the event of industrial action that impacts assessment, progression, and award, Education Committee will establish an Examinations and Assessments Contingency Panel (EACP).

## 2 Applying Mitigation

### 2.1 Operating Principles

1. Module and Programme Leaders are best placed to reach a judgement as to whether their modules

removed from the timetable. It will be the responsibility of the department which owns the module to notify students of changes to the methods of assessment.

5. If the preferred option is offering the student another opportunity to take the assessment as if for the first time and without penalty (deferral), this must be agreed before students submit assessments or sit an exam. This option can only be used with the authorisation of EACP who will require an assessment of the impact on students.

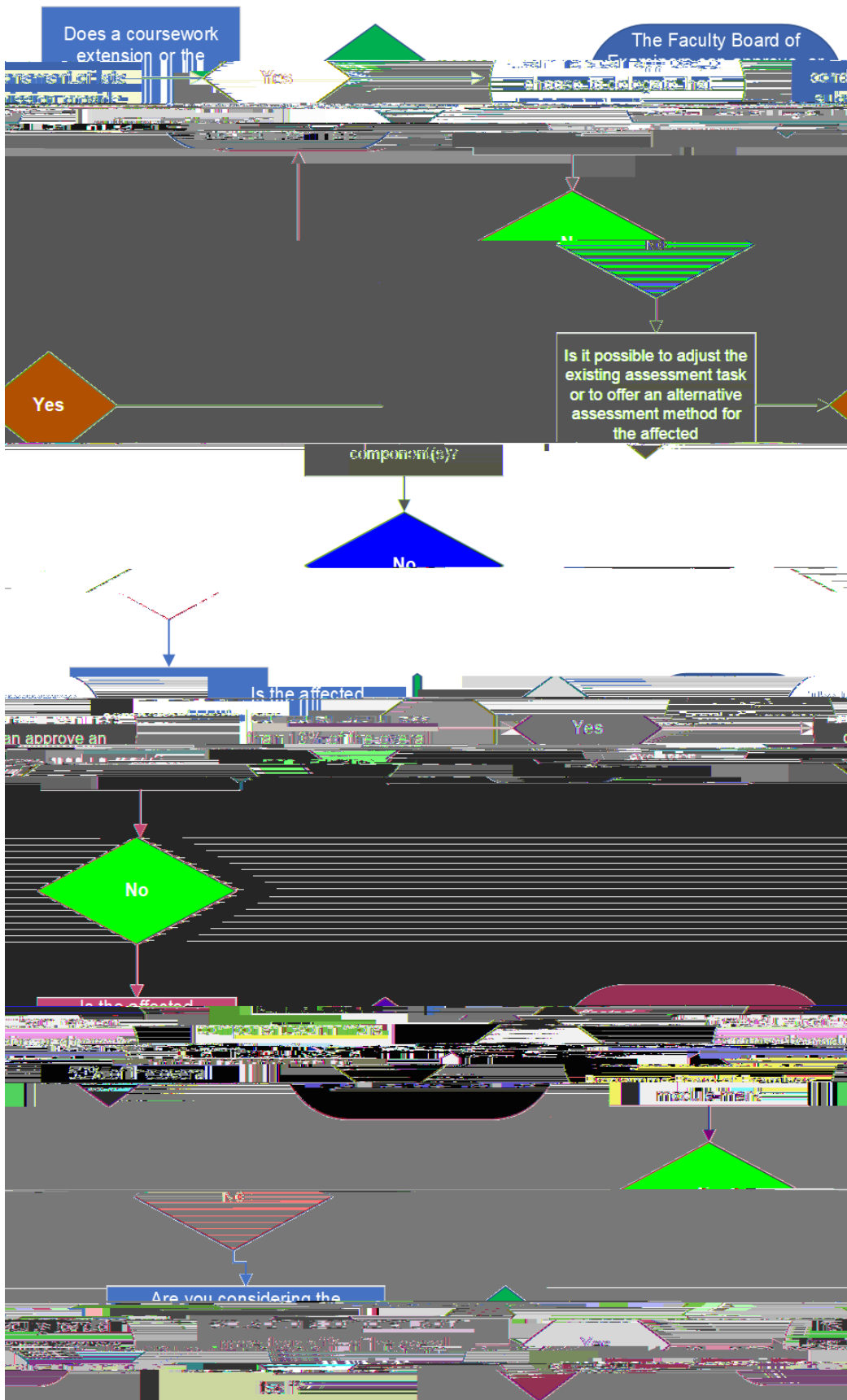
## **2.5 Component and Module Exclusions**

1. M/MCID 6/L004800ill/MCID 5/p0000ACP

## 3 Operational Guidance for Exam Board Chairs and Exam Liaison Officers

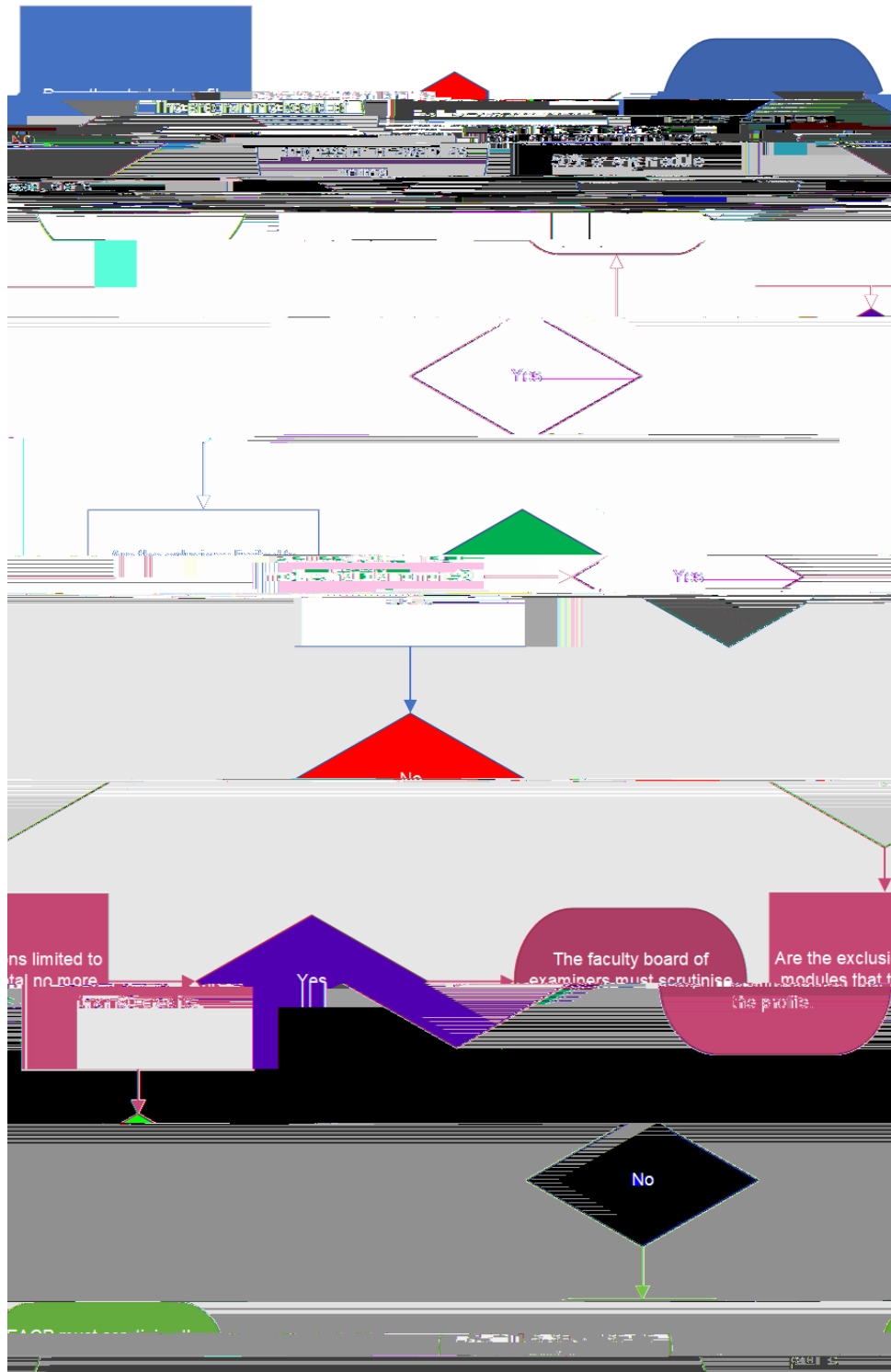
### 3.1

### 3.5 Industrial Action Mitigation flowchart



### 3.6 Industrial Action Mitigation Cumulative Effect flowchart

In order to reassure students and manage the assessment process effectively, mitigation will need to be applied before a Board of Examiners meets to make decisions about progression, completion, awarding and classification. In order to safeguard academic standards, a Board of Examiners will need to assure itself that the cumulative impact of any mitigation does not undermine academic standards.



## 4 Further Questions

1. Please contact [academicregulations@ucl.ac.uk](mailto:academicregulations@ucl.ac.uk) if you have further questions about industrial action and its impact on assessment, progression, and award.