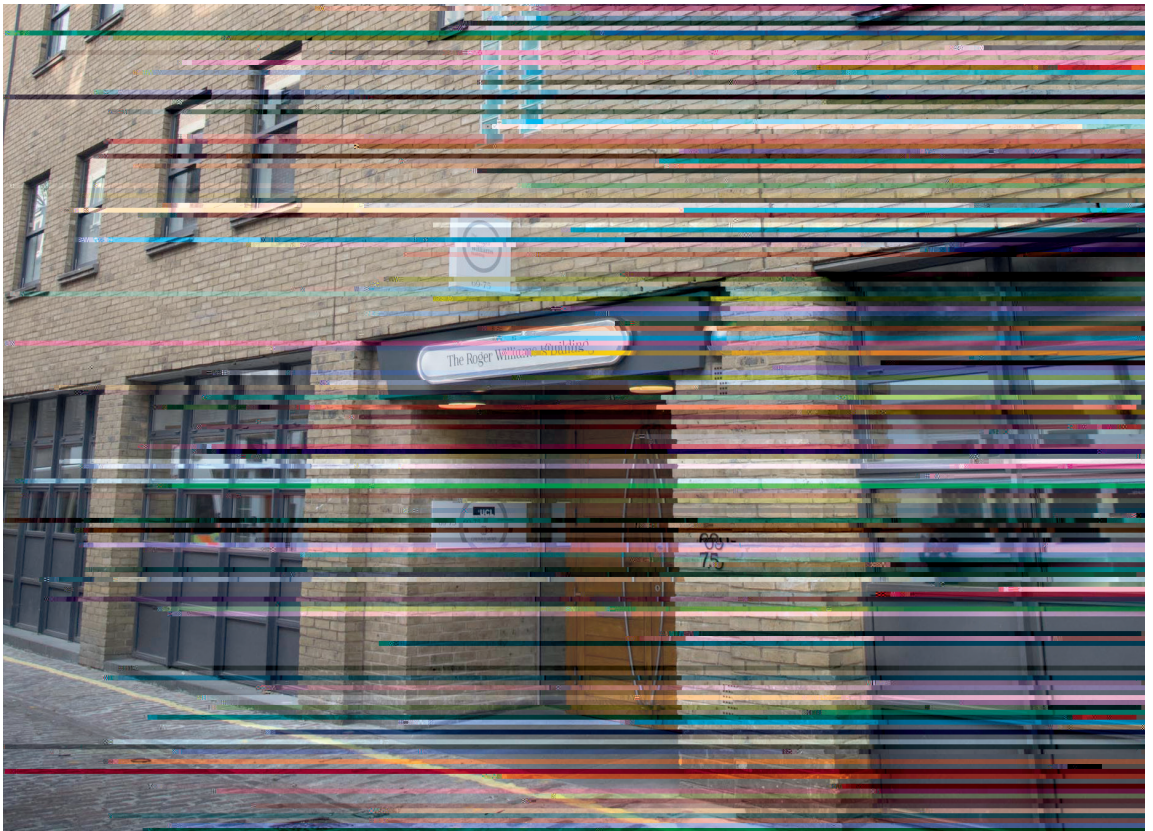


MRC National Survey of Health and Development

Invitation to participate



Bloomsbury Centre for Clinical Phenotyping London

We are writing to invite you to take part in a round of health information collection in London for a neuroimaging sub-study. This is a clinical sub-study that will complement the regular home visits and postal questionnaires.

The MRC NSHD neuroimaging sub-study began in 2015. To date, two phases of data collection have been completed (phase 1: 2015-2018; phase 2: 2018-2020), and 502 members of the NSHD have participated in the Neuroimaging sub-study. We have received some additional funding that allows us to undertake another round of data collection in London.

Details are provided below, but in brief, the first day of assessments will include some memory tests, clinical examination, exercise assessments and a brain scan. The second day of assessments, all of which are optional, will finish in the early afternoon. You will be offered the opportunity to participate in as many or as few tests as you would like, including some additional memory tests, assessments of blood flow, cardiovascular tests, a bone density scan and a lumbar puncture.

Before you decide if you would like to participate, it is important for you to understand why the research is being done and what it will involve. Please take whatever time you need to discuss the study with your family and friends. Your participation is voluntary.

For this clinical sub-study, the research team responsible for the MRC National Survey of Health and Development (NSHD) is collaborating with neurologists who work at the National Hospital of Neurology and Neurosurgery, and Institute of Neurology at University College London (UCL).





What is the MRC NSHD Neuroimaging sub-study?



Why have I been invited to participate?

Do I have to take part?

What will I have to do if I take part?

At the visit we would like to:



You can opt to have some or all of these tests.

Pre-visit discussion



A typical overview of Day 1 is as follows:

DAY 1

Clinical assessments and physical examination

What are the risks of having a blood test?

Wearable devices

Sleep monitor



Glucose monitor

Brain scanning

What type of scan will I have?

Why am I having this scan?



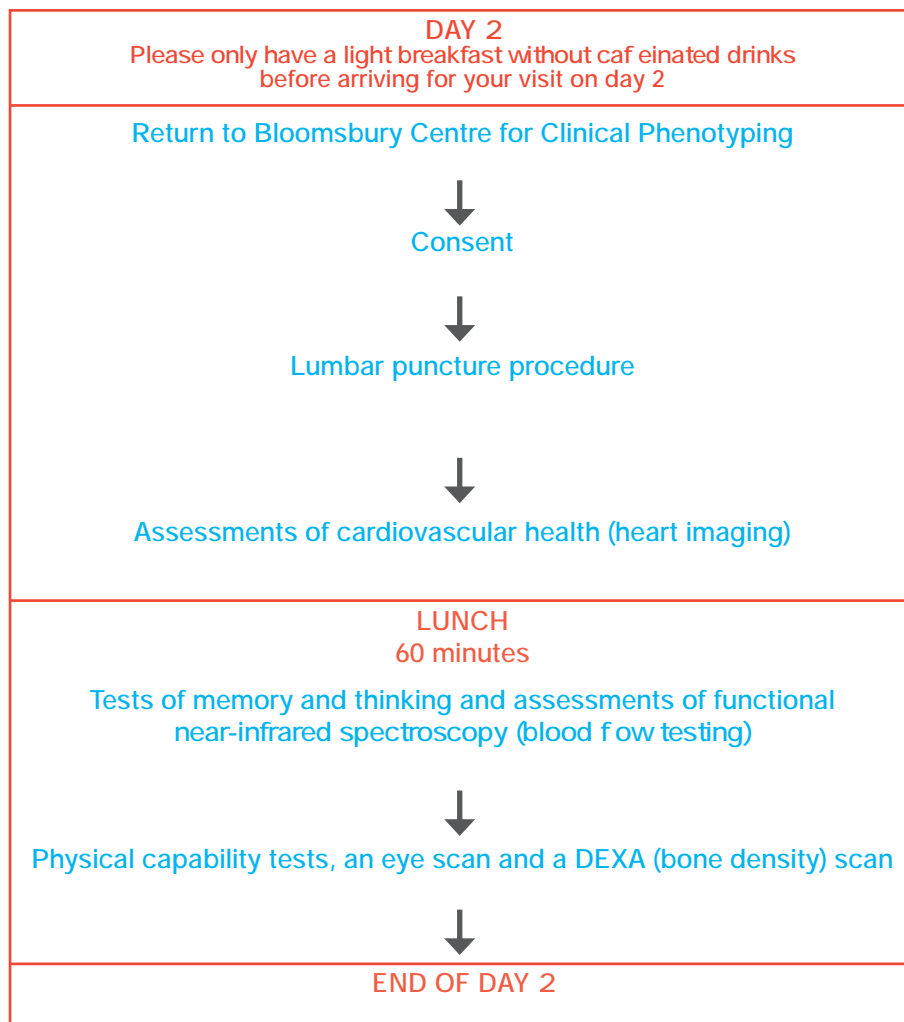
What are the risks of the scan?



Additional measures on Day 2 (optional)

You may choose to have all, some or none of these tests.

A typical overview of day 2 is as follows:



Assessments on Day 2

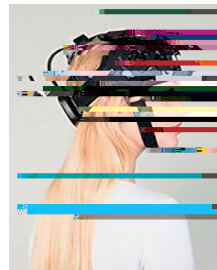
Lumbar puncture

What is a lumbar puncture?

Cardiovascular tests

Additional tests of thinking and memory

Functional near-infrared spectroscopy (NIRS)



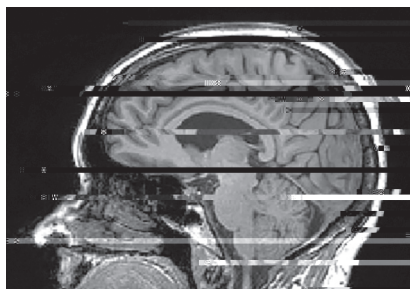
Physical capability tests

Eye scan

Ending involvement in the Neuroimaging sub-study

Involvement of your General Practitioner (GP)

What are the possible benefits of taking part?



New Information



General Data Protection Regulation – Research at UCL and your data

data-protection@ucl.ac.uk

Data Protection Officer, UCL Gower Street, London WC1E 6BT

www.ucl.ac.uk/legal-services/privacy/participants-health-and-care-research-privacy-notice

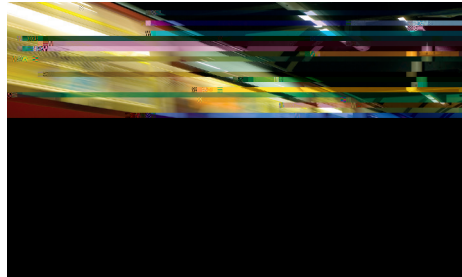


Public task

Research purposes

How will your information be shared?

Expenses and Payments



What if there is a problem?

What will happen to the results of the study?



Who is organising and funding the research?

Who has reviewed the study?

What happens next?



*If you have any queries about your appointment
please contact:*

Ms Heidi Murray-Smith

020 3108 2670

Insight46@ucl.ac.uk

*If you have any queries about the NSHD
please contact:*

Dr Andrew Wong

andrew.wong@ucl.ac.uk
www.nshd.mrc.ac.uk



Location of the Bloomsbury Centre for Clinical Phenotyping